

# Tigo® Cloud Connect Advanced (CCA) Quick Start Guide

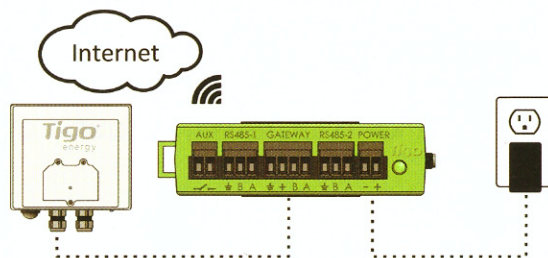
1. Read Installation and Safety Manual and download Tigo SMART app



[www.tigoenergy.com](http://www.tigoenergy.com)

844-805-8550  
00800-CALL-TIGO (2255-8446)

2. Ensure AC power and Internet availability and plan RS-485 route for Gateway



The Cloud Connect Advanced requires AC power, an Internet connection (Ethernet or Wi-Fi), and an RS-485 communication cable connection to the Gateway(s).

It is recommended to install the CCA on the same AC panel as the inverter, causing PV-Off to trigger in case of AC grid loss.

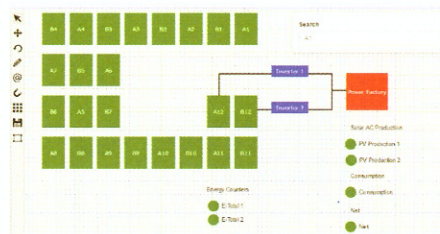
**Connect Gateway wires before powering on the CCA.**

3. Configure system online or with Tigo SMART app



Systems with fewer than 50 smart modules can be configured automatically on-site with the Tigo SMART app. Systems using 2ES add-on optimizers or more than 50 modules should be configured online through the monitoring portal prior to commissioning.

4. Create physical system map

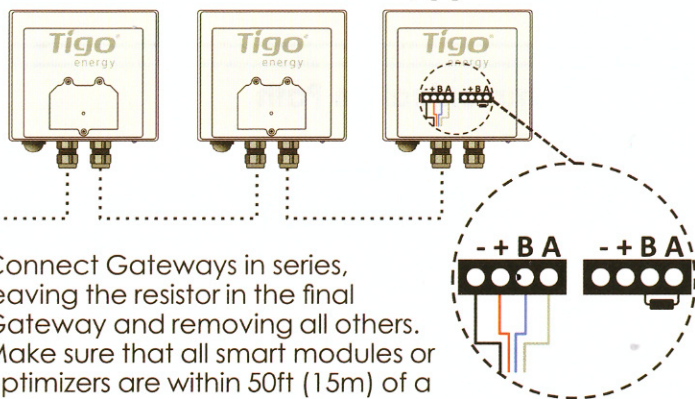


To create a map of the system that matches the physical layout, remove the peel-off stickers from the smart modules\* or record the barcodes on a map that represents their physical location.

Use the configuration wizard and appearance editor at [tigoenergy.com](http://tigoenergy.com) to edit the map. (Optional for systems under 50 smart modules.)

\*Located on the smart module junction box.

5. Install Gateway(s)

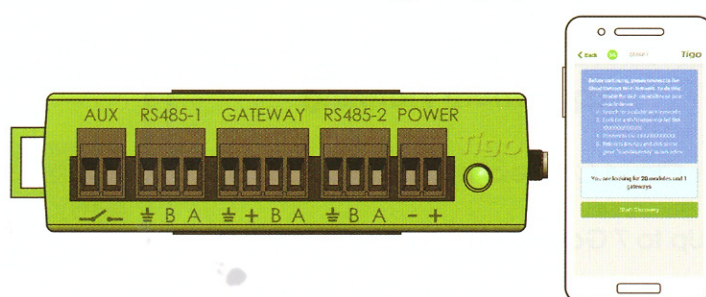


Connect Gateways in series, leaving the resistor in the final Gateway and removing all others. Make sure that all smart modules or optimizers are within 50ft (15m) of a Gateway.

**Verify wiring polarity before connecting Gateway(s) to CCA.**

**Connect Gateway wires before powering on CCA.**

6. Commission the Tigo equipment

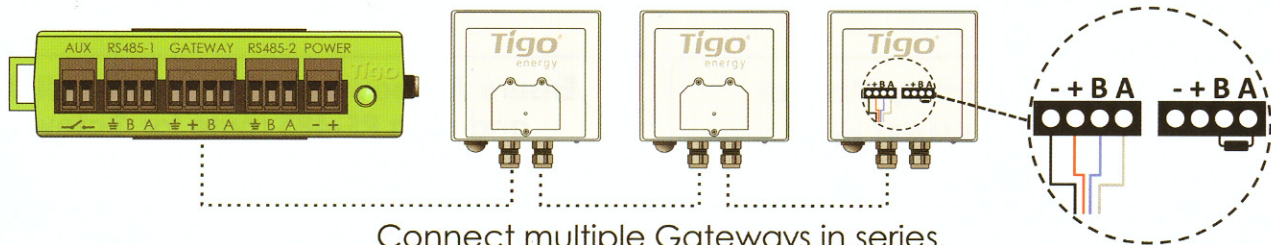


Use the Tigo SMART app to configure the Internet connection (wired Ethernet or Wi-Fi.) Select **Start Discovery** in the app to begin scanning for smart modules or add-on devices.

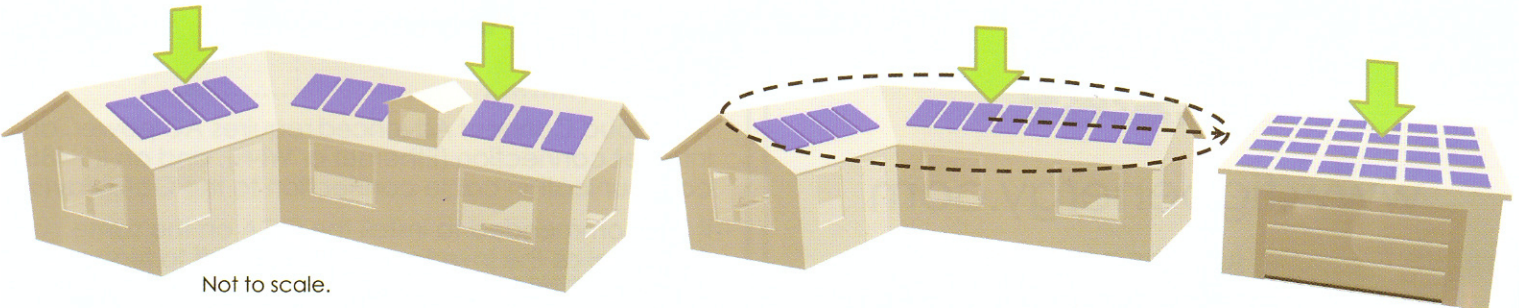
Discovery should be initiated from the Tigo SMART app while on-site and connected to the CCA via Wi-Fi.



## Tigo Energy Smart Module System Layout



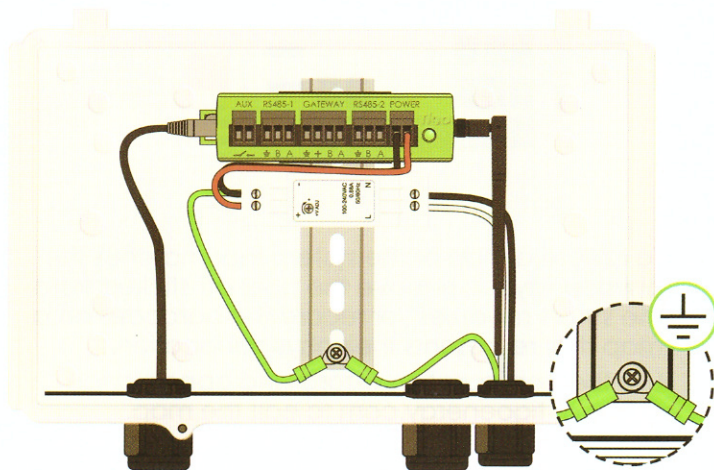
Connect multiple Gateways in series.  
Place Gateways around obstructions and on different orientations.



Not to scale.

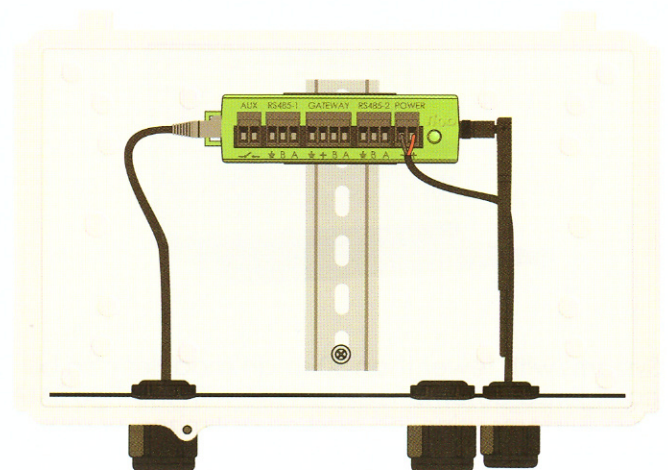
Use additional Gateways for smart modules outside the 50ft (15m) radius.

## Connecting Power and Ground Wires



### DIN Rail power supply:

- Connect DC leads from power supply to CCA
  - Connect AC and DC ground wires to DIN rail
  - Connect AC power input to power supply
- Optional AC power cord not supplied in this kit



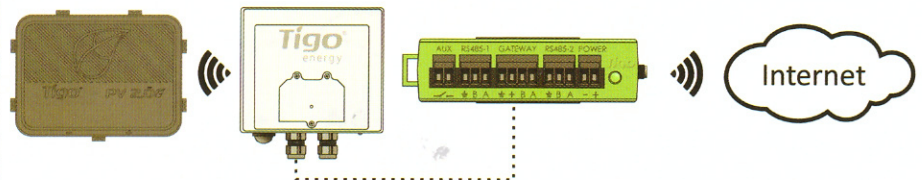
### Transformer power supply:

- Connect DC leads to CCA

## Equipment Planning

- 1 Cloud Connect per 360 smart modules
- Up to 7 Gateways per Cloud Connect
- 120 smart modules per Gateway within 50ft (15m) line-of-sight radius

## Communication Path



### Wireless:

50ft (15m)  
max radius

### RS-485 Communication Cable:

Please visit [support.tigoenergy.com](http://support.tigoenergy.com)  
for cable types and NEC compliance

### Ethernet or Wi-Fi